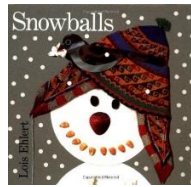
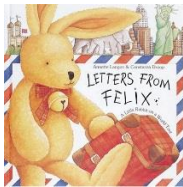


Bethel Preschool January Newsletter 2016

Happy New Year

Happy New Year from the staff here at Bethel Preschool!!!! We had a wonderful end of the year Christmas Celebration with you all. Thank you to coming to our devotion with Pastor Squires and singing all of the beautiful Christmas songs with us. We also wanted to thank you for your donations to the cookie party. What a wonderful way to end the 2015-year, celebrating Jesus' birth!



January Preschool News

January is a favorite time of year at Bethel Preschool. Both classes start traveling class projects that always bring great joy to the children. The 3-Day Class takes turns bring home Felix the rabbit. He travels to each of the children's homes and writes about his adventures in a letter, which is then mailed back to the preschool. It is very exciting to have Felix come visit your house! The 2-Day children take turns bringing home Carson the Snowman. Carson starts out very plain, but as he travels from home to home items get added and he turns out to be a very unique and special snowman each year! We really enjoy these special projects each year. Your child's teacher will send home more specific information about the project.

Winter Weather

Now that winter weather is upon us, we may need to get our daily gross motor exercise in the gym if it is too cold (below 20°F) or wet outdoors. If there is snow, we will try to go outside to play, so bringing outdoor gear (boots, snow pants, etc.) on a daily basis is a good idea. Besides, getting dressed in all that outerwear is great practice in self-help skills for your child. If your child comes to school wearing snow boots, remember to bring along clean gym shoes so he or she can safely run, jump, and play indoors. We do have a limited number of "borrow" shoes available if you forget your own shoes.



Dates to Remember:

*WELCOME BACK
January 4, 2016!*

Wed. January 13 – Bookmobile

Mon. January 18 – M.L.K. Day – No School

Wed. January 27 – Devotion with Pastor Squires