

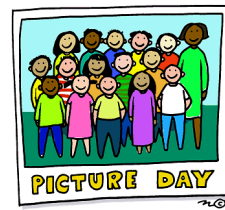
Bethel Preschool February Newsletter 2017

♥ Happy Valentines Day ♥

When February arrives we know that the preschoolers will be getting ready for Valentines Day! They will make special milk carton mailboxes to hold their Valentines. **Please send in a washed (and dried out) plastic gallon milk carton as soon as possible.** Please peel off the label as best you can and cut the top off (as our sample on the check-in table indicates). Write your child's name on the bottom with permanent marker (we'll have a marker here if you need it). It helps us immensely if you do that for us so the teachers don't have to do all of them.

The Valentine parties will on Friday February 10 for the 2 Day class and Monday February 13 for the 3 Day class. Your child is welcome to exchange valentines with the class. Encourage your child to write his or her name on the valentine card. Do a few each day so it doesn't become an arduous task.

Please remember, this is hard work for some of the children, and just learning to write their first initial is a successful first step. It's amazing how many children begin to write their names during February! **DO NOT address the valentines TO anyone.** We will assist your child to drop a card into each mailbox on party day. If they are not addressed, the whole process goes much more smoothly.



February 1 will be the picture taking day for the kids here at Bethel. E.D. Clark Photography has been taking school pictures of the children for 29 years. The individual and class photos always look great. Please see Mrs. Stutzman if you did not receive an order form.

Share the Love, Cans for COOL

It is time to hold our annual food drive for COOL Food Pantry in Waukegan. We have chosen to collect in February so we can share our hearts with those in need.

Please bring in canned/boxed food items. When you arrive at school you can have your child your child apply a small paper heart to their item(s). They can send a special message on all of the items they bring! We will have the paper hearts and supplies in the hallway by the cubbies. The collection will start on February 1 and continue through Valentine's Day. Some items that were requested are Cereal (hot and cold), Pancake Mix, Muffin Mix, Soup, Peanut Butter, Canned Tuna or Chicken. We will have some boxes in the hallway that will highlight the items the food pantry is most in need of. The pantry does request that you please do not bring items in glass containers. Thank You!

Mark Your Calendar!!!

Wed. Feb. 1 – Picture Day
Wed. Feb. 8 – Bookmobile
Fri. Feb. 10 – 2 Day Valentine Party
Mon. Feb. 13 – 3 Day Valentine Party
Wed. Feb. 15 – Dental Health Presentation
Mon. Feb. 20 – President's Day – No School
Sun. Feb 26 – Sat. March 4 – Rummage Sale!!!
Wed. March 1 – Devotion with Pastor Squires

February A Time for Love!

We will be learning new devotion songs focused on love for our devotion with Pastor Squires. We will sing, We Love (because God first loved us), Love, Love, Love, and 1,2,3 Jesus Loves Me. It is a special time of year to talk about our love for each other and our families. It is also a time to learn and talk about the love of God for all people, as evidenced by His Son, our Savior, Jesus Christ.